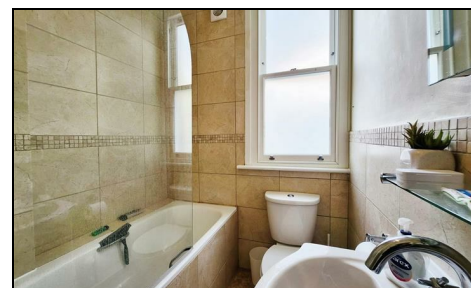


Kings Road Wimbledon, SW19 8QW

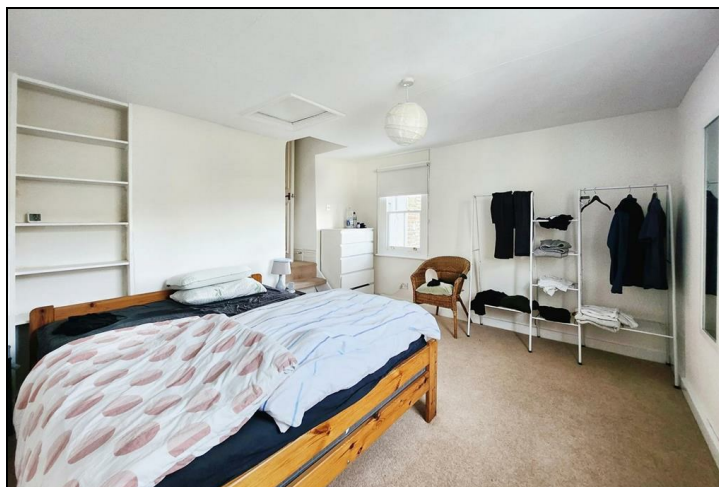
£1,600



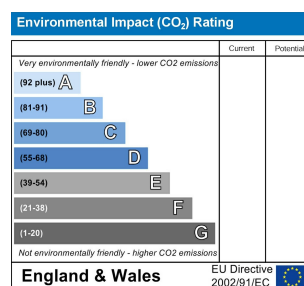
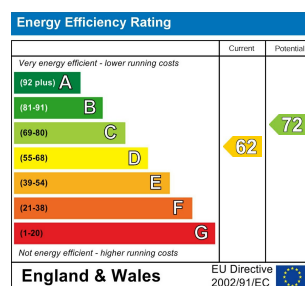
A charming ONE BEDROOM flat set within this gorgeous period building on one of WIMBLEDON'S PRIME RESIDENTIAL ROADS next to South Park Gardens. Ideal location just a FEW MINUTES WALK TO WIMBLEDON STATION for the overground and District Line and town centre. Comprising bright and airy living room, spacious double bedroom, fully fitted kitchen with induction hob, modern fitted bathroom with shower over bath.

EPC band D. Council tax band C.

**** PLEASE NOTE SINGLE OCCUPANCY ACCEPTED ONLY ****



- Gorgeous Period Building
- Prime Residential Road
- One Double Bedroom
- Fully Fitted Kitchen
- SINGLE OCCUPANCY ONLY
- One Months Rent in Advance
- Security Deposit- 5 weeks rent
- Holding Deposit = One weeks rent
- EPC band D
- Council tax band C



Although these particulars are believed to be correct, their accuracy is not guaranteed and they do not form part of any contract.

Celebrating 30 years of successful Sales and Lettings in Merton

